



PCORE
ELECTRIC

KV CLASS 46 kV **BIL** 250 kV **Uy** 29 kV

CURRENT RATING

400 AMP DRAW LEAD CONNECTION
1200 AMP BOTTOM CONNECTION

DWG. **CATALOG NUMBER** **GLAZE COLOR**

SD B-89493-48 BROWN

SD B-89493-48-70 LT. GRAY

DATE 4-13-10 **REV. DATE** 3-20-19

MAXIMUM ALTITUDE 10000 ft [3000 m]

NET WEIGHT 138 lb [63 kg]

ANGLE OF INCLINATION FROM THE VERTICAL 0° TO 70°

MIN. CREEP 49.00 [1244.6] **MIN. STRIKE** 21.00 [533.4]

CREEP/L-G 1.85 [46.9] **STD.** IEEE C57.19.00/01

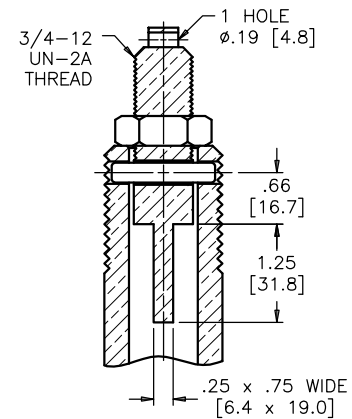
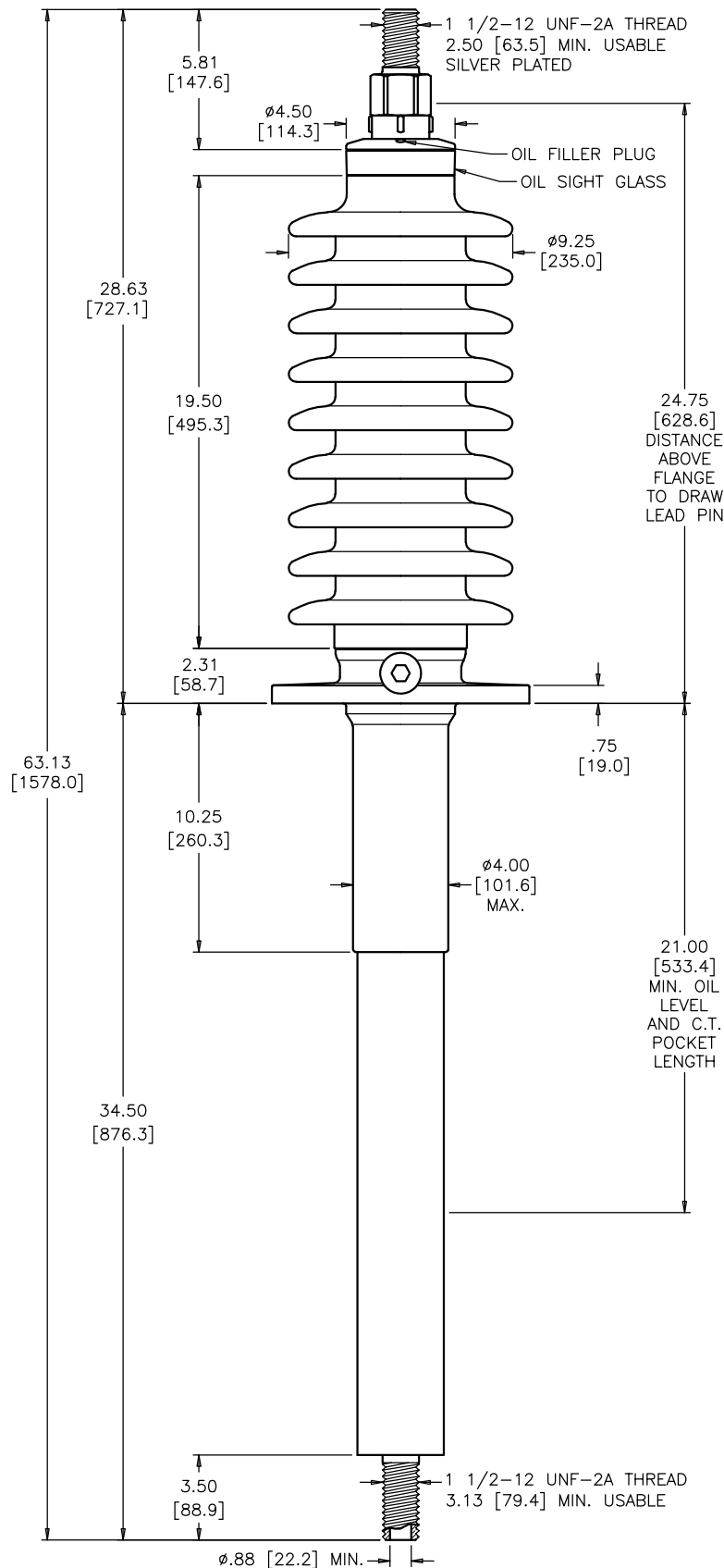
PCB CONTENT OF OIL IS LESS THAN 1 ppm

TITLE

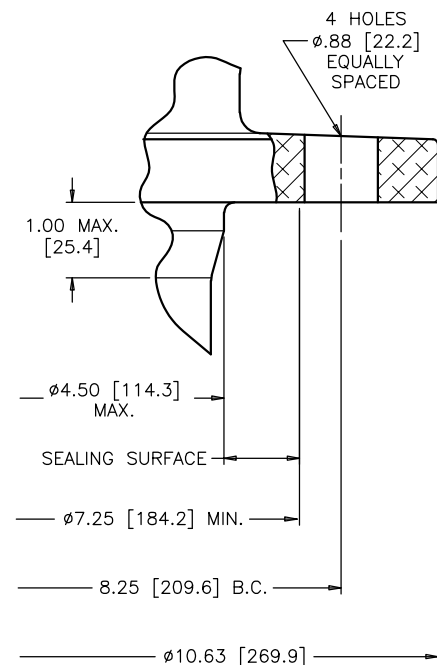
PRC BUSHING

1.00 [25.4] LONGER BELOW FLANGE

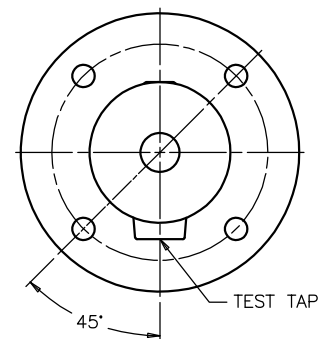
NOTE: ACTUAL DRAW-LEAD CURRENT RATING IS DETERMINED BY CABLE SIZE



DRAW LEAD ASSEMBLY



MOUNTING FLANGE DETAIL



**FLANGE ALIGNMENT DIAGRAM
TOP VIEW**

DIMENSIONS IN INCHES [MILLIMETERS]

REVISION ADDED DRAW-LEAD CURRENT RATING NOTE, CORRECTED ROUNDING, CREEP/L-G WAS CREEP/Uy

SCALE 1/5

NOTE TO PURCHASER:
ALL SALES OF PCORE PRODUCTS ARE SUBJECT
TO OUR STANDARD TERMS AND CONDITIONS
AND THE LIMITED WARRANTIES THEREUNDER